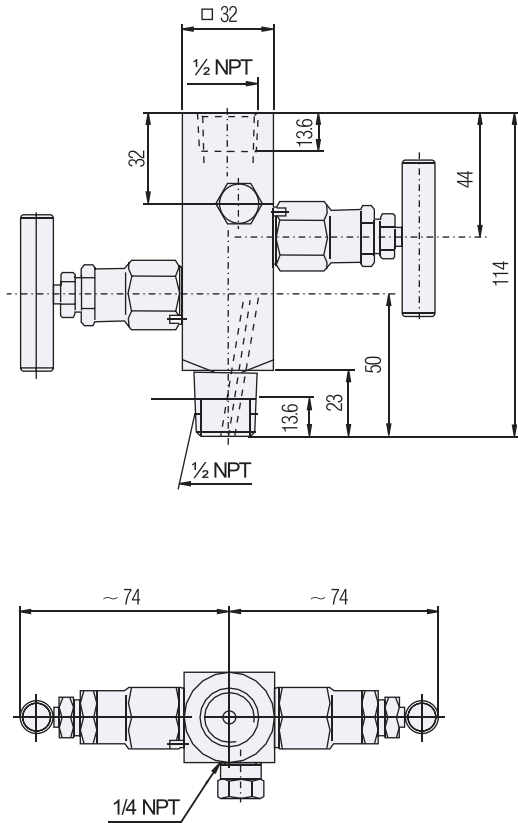


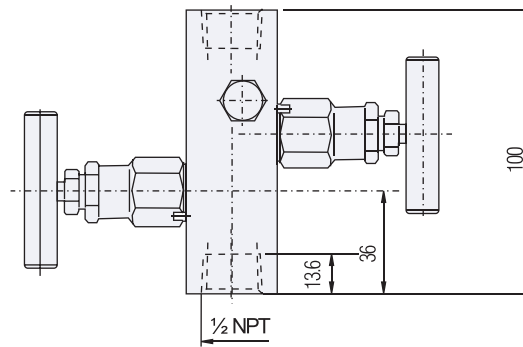
Block and Bleed Valve PN 420 DN 5 female / female and male / female

CONFIGURATIONS AND DIMENSIONAL DATA

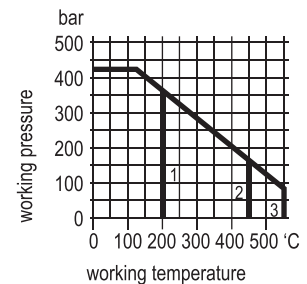
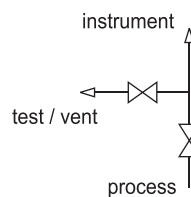
Type 1



Type 2



- 1 PTFE packing
- 2 graphite packing - 1.0460
- 3 graphite packing - 1.4404



Type	Material	Inlet	Connections		Part no.
			Outlet	Test / Vent	
1	steel st. st. 316	1/ 2 NPT male	1/ 2 NPT female	1/ 4 NPT female with screw plug	N354.60.101.05 N354.60.401.05
2	steel st. st. 316	1/ 2 NPT female			N354.60.109.05 N354.60.409.05

Components	Steel	Stainless steel
	DIN - Material Number	
Body	1.0460	316L
Bonnet	316	
Valve stem	316	
Needle tip	1.4122	316
Packing	PTFE up to 200 °C (graphite up to 550 °C)	
Gland nut	1.4301	
T-handle	stainless steel	

- Surface: steel phosphatized
- Working pressure up to 700 bar (10.000 psi) on request
- External stem thread
- Stem with cold rolled surface, back seat and non-rotating needle tip
- The valves can be supplied according to **NACE-standard**

On request:

- Anti-tamper facility
- Panel mounting
- Extended body on male inlet port
- Padlocking facility