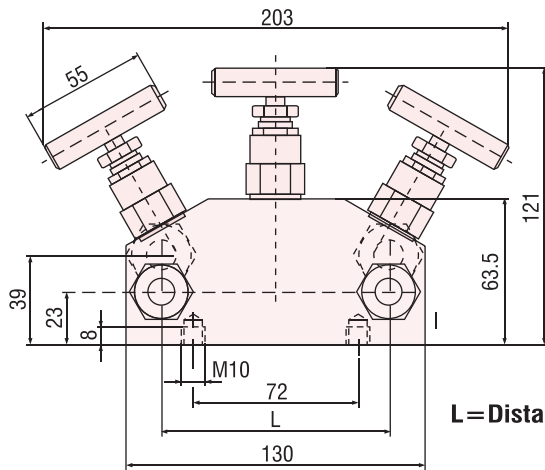


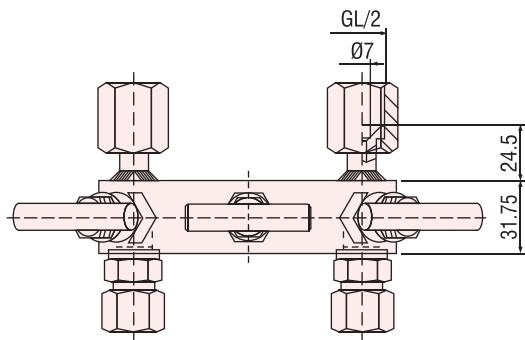
### 3 Valve Manifold PN 400 bar / 6000 psi

For Differential Pressure Gauges Model BIDPA and BIDPB

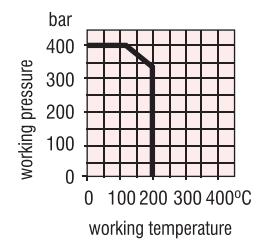
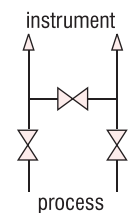
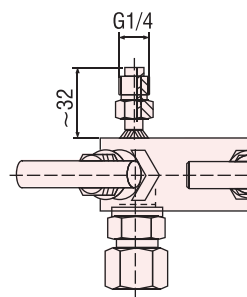
#### DIMENSIONAL DATA AND DRAWING



**L = Distance between centre to centre "HP" to "LP"**



alternative  
instrument connection  
swivel male :



Material	Distance L [mm]	Connections		Part no.
		inlet	Outlet	
steel Stainless steel	37	tube fitting O. D. 12 mm line S, G 3/8	swivel nut G 1/2	N342.141.01 N342.241.01
steel Stainless steel	54			N342.141.02 N342.241.02
steel Stainless steel	100			N342.141.03 N342.241.03

Components	Steel	Stainless steel
	DIN - Material Number	
Body	1.0460	1.4404
Bonnet	1.4401	
Valve stem	1.4404	
Needle tip	1.4122 <sup>4)</sup>	1.4571
Packing	PTFE	
Gland nut	1.4301	
T-handle	stainless steel	

- ⇒ Surface: steel phosphatized
- ⇒ External stem thread
- ⇒ Stem with cold rolled surface, back seat and non-rotating needle tip
- ⇒ Special types are available
- 1) Can also be supplied for oxygen service.
- 2) Available with inspection certificate 3.1.B acc. to EN 10 204
- 3) The manifold can be supplied with male connectors G 1/2 or 1/2 NPT instead of tube fittings on the inlet ports.
- 4) 1.4122 quenched and tempered